



ROAD SAFETY EQUIPMENT



www.smbtrd.com



PVC CONE

Material - PVC
 Full of PVC Plastic- UNBROKEN
 With 2 Reflective tapes, Board can be attached by adaptor
 Sizes: 36 x 70cm
 36 x 90cm



TRAFFIC CONE WITH RUBBER BASE

Size: 1m Weight: 5 K.G
 Size: 75cm Weight: 5 K.G
 Size: 50cm Weight: 5 K.G



FOLDABLE CONE WITH LIGHT

Height: 60CM



CONVEX MIRROR

Easy to install.
 Attachable on wall or pole.
 Sizes: 45cm



CONVEX MIRROR

Easy to install.
 Attachable on wall or pole.
 Sizes: 60cm



CONVEX MIRROR

Easy to install.
 Attachable on wall or pole.
 Sizes: 80cm



CONVEX MIRROR

Easy to install.
 Attachable on wall or pole.
 Sizes: 100cm



CAUTION BOARD

Features: Double Sided, Easy to Move
 Size: 30 x 60cm



CAUTION BOARD

Features: Double Sided, Easy to Move
 Size: 30 x 60cm



CAUTION BOARD

Features: Double Sided, Easy to Move
 Size: 30 x 60cm



CAUTION BOARD

Features: Double Sided, Easy to Move
 Size: 30 x 60cm



CAUTION BOARD

Features: Double Sided, Easy to Move
 Size: 30 x 60cm



CAUTION BOARD

Features: Double Sided, Easy to Move
 Size: 30 x 60cm



CONE BAR
Red and White
Yellow and Black
Size: 2m



BATON LIGHT
Green and Red
Size: 54 x 4cm



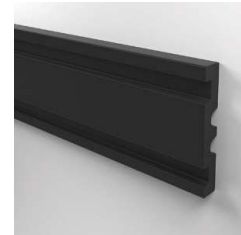
BATON LIGHT
Green & Red: Battery
Green & Red: Rechargeable
Size: 54 x 4cm



TRAFFIC SIGN DOUBLE SIDE
16 LEDs
Rechargeable
Material: ABS
Charge: 5hrs, Useage: 6-8hrs



WALL GUARD
Material: Rubber
Size: 100 x 16 x 5cm



WALL GUARD
Material: Rubber
Color: Black
Size: 100 x 20 x 3cm



L CORNER GUARD
Manufactured from flexible and high strength rubber. Tamper resistant.
80 x 10 x 1cm



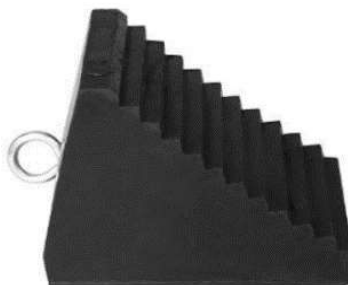
L CORNER GUARD
Manufactured from flexible and high strength rubber. Tamper resistant.
100 x 10 x 1cm



CORNER GUARD WITH METAL PLATE
Material: Rubber and Metal
Color: Yellow/Black
100 x 7.5 x 1cm



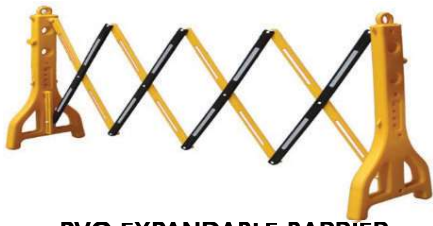
WHEEL CHOCK 2kg
Light weight yet durable enough to keep any vehicle or trailer in place.
Size: 21 x 15x 10.5cm



WHEEL CHOCK 4KG
Hook Type
24 x 16.5 x 19cm



WHEEL CHOCK
Material: PVC
Color: Yellow
Size: 20 x 11.5 x 11cm



PVC EXPANDABLE BARRIER

Expandable upto 2.5 metres
Size: 250 x 96cm



METAL EXPANDABLE BARRIER

Expandable upto 2 metres
Weight: 10 K.G
Size: 200 x 110cm



EXPANDABLE BARRIER

Material: PVC
Color: Yellow
Expandable upto 3.50 Meter
Size: 350 x 30 x 100cm



PARKING WHEEL STOPPER

Black color with yellow bead strip
Superior strength
Easy to install
Size: 183 x 15 x 10cm



PARKING WHEEL STOPPER

Black color with yellow bead strip
Superior strength
Easy to install
Size: 90 x 15x 10cm



PARKING WHEEL STOPPER

Black color with yellow bead strip
Superior strength
Easy to install
Size: 55 x 15 x 10cm



WHEEL STOPPER 60CM

Heavy Duty Rubber
Size: 60 x 12 x 10cm



CABLE PROTECTOR INDOOR SMALL

Material: PVC
Color: Yellow
Size: 100 x 14 x 2cm



1 CHANNEL CABLE PROTECTOR SMALL

Channel Size: W 30mm x H 15mm
Size: 100 x 15 x 3cm



1 CHANNEL CABLE PROTECTOR HUMP

Material: Rubber
Channel Size: W 65 x H 55
Interlocking system to build the length you need.
Size: 100 x 26 x 6cm



2 CHANNEL CABLE PROTECTOR HUMP

Material: Rubber
Channel Size: W 30 x H 30
Interlocking system to build the length you need.
Size: 100 x 25 x 5cm



3 CHANNEL CABLE PROTECTOR HUMP

Material: Rubber
Channel Size: W 65 x H 55
Interlocking system to build the length you need.
Size: 90 x 50 x 7cm



5 CHANNEL CABLE PROTECTOR HUMP

Material: Rubber
Channel Size: W 30 x H 30
Size: 100 x 50 x 5cm



ROAD HUMP CABLE 1M

Material: Rubber
 Instant installation with the use of epoxy and bolts.
 Black & Yellow for better visibility.
 Size: 100 x 30 x 5cm
 End Cap: 15 x 30 x 5cm



ROAD HUMP 1M

Material: Rubber
 Instant installation with the use of epoxy and bolts.
 Black & Yellow for better visibility.
 Size: 100 x 35 x 5cm



ROAD HUMP 50cm

Material: Rubber
 Modular design provides ease in installation.
 Colour: Yellow
 Size: 50 x 35 x 5cm



ROAD HUMP 50cm with CATEYE

Modular design provides easy installation.
 Color: Black
 Size: 50 x 35 x 5cm



END CAP

Color: Black & Yellow - 1m
 Size: 17.5 x 35 x 5cm
 Material: Rubber



END CAP

Color: Black & Yellow - 50cm
 Size: 17.5 x 35 x 5cm
 Material: Rubber



ROAD HUMP 1M HEIGHT 7CM

Material: Heavy Duty Rubber
 Color: Yellow and Black
 Size: 100 x 38 x 7cm
 End Cap: 19 x 38 x 7cm



DOCK BUMPER

Material: Rubber
 Color: Black
 Size: 50x 25 x 10cm



KERB RAMP

Material: Rubber
 Color: Black
 Size: 50 x 25 x 12cm



KERB RAMP

Material: Rubber
 Color: Black
 Size: 100 x 25 x 12cm



SPRING POST 75 cm

Unbroken & Flexible.
 Color: Orange
 Black
 Size: 20 x 75cm



WARNING POST 75CM

Material: PE
 Color: Orange
 Size: 20 x 75cm



SAFETY POST RED AND WHITE

Water can be filled to add weight.
 Chain can be attached to create a barricade.
 Color: Red and White
 Size: 30 x 90cm



WARNING POST 90CM

Material: PE
Color: Orange
Size: 20 x 90cm



WARNING BOLLARD WITH RING

Rubber Base
Insert and twist lock system for base.
Ring on top for chain.
Size: 26 x 80cm



WARNING BOLLARD WITH RING

Rubber Base
Insert and twist lock system for base.
Ring on top for chain.
Size: 26 x 120cm



T-TOP BOLLARD

Material: PE
Reflective: 150mm
Weight: 6 K.G
Size: 110 x 10cm



RETRACTABLE QUEUE BARRIER

Red Belt 2M Size: 90 X 32cm
Blue Belt 2M Size: 90 X 32cm
Black Belt 2M Size: 90 X 32cm
Material: S.S. Weight: 5kgs



RETRACTABLE QUEUE BARRIER

Gold with Red Belt Size: 90 X 32cm
Material: S.S.
Weight: 5kgs



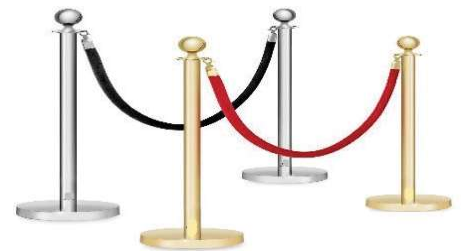
FULL BLACK QUEUE BARRIER

Red Belt 2M Size: 90 X 32cm
Black Belt 2M Size: 90 X 32cm
Material: S.S. Weight: 5kgs



CROWN TOP BARRIER

Silver Size: 98 x 32cm
Material: S.S.
Weight: 6kgs



CROWN TOP BARRIER

Gold Size: 98 x 32cm
Material: S.S.
Weight: 6kgs



VELVET ROPE

Red, Blue and Black
Length: 1.5m
Material: Velvet



KNITTED ROPE

Color: Red, Blue and Black
Length: 1.5m
Material: Knit



FIRE BLANKET

Pull tabs to release.
Fire retardant material.
Sizes: 1.2m x 1.2m
1.2m x 1.8m
1.8m x 1.8m



SOLAR FLASHING CONE LIGHT

Monocrystalline solar panel
Super bright LED
Color: Yellow & Red



WARNING LIGHTS

Water Barrier warning light.
Solar powered
High intensity double sided light with
bright LED.
Color: Yellow & Red



WARNING LIGHT

Solar Powered
Flashing Light
Color: Yellow & Red



JACKET WITH WHISTLE

High visibility jacket with
a whistle.
Size: Free size



FLAG

Green: 50 x 30cm
Red: 50 x 30cm



SOLAR WARNING LIGHT

Color: Yellow
No. of LEDs: 72
Size: 30cm



**SOLAR WARNING LIGHT
YELLOW ARROW**

Solar Powered
Color: Yellow Black
LED Color: Red
Size: 120 x 5 x 40cm
Style: With Stand
Without Stand



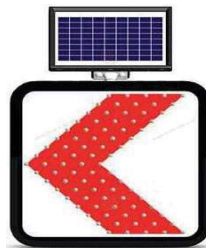
RIGHT LEFT SOLAR LED LIGHT

Material: Aluminium
LED Color: Yellow
Size: 120 x 4 x 40cm



SOLAR LIGHT RED ARROW

Material: Aluminium
LED Color: Red
Size: 120 x 5 x 40cm



SOLAR DANGEROUS BEND SIGN

Material: Aluminium
LED Color: Red
Size: 60 x 60cm



SUNFLOWER WARNING LIGHT

8 Ultra-LED
LED Color: Yellow
Size: 37 x 7 x 37cm



FIRST AID KIT

Material: Plastic Box
Color: White
Size: 10 Persons
Size: 25 Persons
Size: 50 Persons



FIRE EXTINGUISHER

Dry Powder Co2
DCD approved cylinders



REFLECTIVE TAPE PLAIN

Color: Yellow, White, Red, Green
Size: 25m x 5cm



REFLECTIVE TAPE ARROW

Size: 25m x 5cm
Colours: Yellow/Black
Green/Black
White/Blue
Yellow/Red



REFLECTIVE STICKER ARROW

Color: Yellow/Black
Green/Black
Size: 5cm
Size: 10cm



PVC CHAIN

Material: PVC
Color: Red and White
6mm x 25m
8mm x 20m



WINDSOCK WITH 4 REFLECTIVE

Material: Cloth
Color: Orange
Size: 100cm
150cm
210cm



WINDSOCK WITH 2 REFLECTIVE

Material: Cloth
Color: Orange
Size: 100cm
150cm
210cm



WINDSOCK FRAME

Material: Zinc
Size: 45cm
Size: With Pole



WINDSOCK POLE

Material: SS
Color: Silver
Size: 250cm



PARKING LOCK SOLAR

Material: Metal
Color: Yellow/Black
Can be used indoors as it comes with a charger.
Size: 30 x 45 x 50cm



PARKING LOCK BATTERY

Material: Metal
Color: Yellow/Black
Battery: 4 x D Size Battery
Size: 30 x 45 x 50cm



**TAHA WL 09
ROAD CONE PPE**
Height: 100cm
Colour: Dark Red
Body: HDPE
Base: Black



**TAHA WL 10
ROAD CONE PPE**
Height: 75cm
Colour: Dark Red
Body: HDPE
Base: Black



**TAHA WL 11
ROAD CONE PPE**
Height: 50cm
Colour: Dark Red
Body: HDPE
Base: Black



**TAHA WL 12
ROAD CONE PVC**
Height: 70cm
Body: Red
Base: Red
Class 1 reflective.



**TAHA WL 14 FLEX
WARNING POST**
Height: 75cm
Post Diameter: 10cm
Base: 21cm
Weight: 1.4kg



**TAHA WL 15 HDPE
WARNING POST**
Height: 80cm
Weight: 2.6kg
Reflective: 30cm
Base: Rubber



**TAHA WL 16 HDPE
WARNING POST**
Height: 120cm
Weight: 2.8kg
Reflective: 45cm
Base: Rubber



**TAHA WL 18
WARNING POST**
Height: 100cm
Weight: 2.85kg
Reflective: 45cm
Base: Rubber



**TAHA WL 19 LDPE
WARNING POST**
Height: 115cm
Weight: 7kg
Reflective: 25cm
Base: Black PVC



**TAHA WL 01 DB RED
WARNING LIGHT**
Traffic light LED: 2 batteries.
2 ultra bright LED PS lens.
Std flash rate: 65+/-5 FPM
Base: Yellow PP



**TAHA WL 02 DB AMBER
WARNING LIGHT**
Traffic light LED: 2 batteries.
2 ultra bright LED PS lens.
Std flash rate: 65+/-5 FPM
Base: Yellow PP



**TAHA WL 03 BATTERY
WARNING LIGHT**
4r 25 6V. Each pc shrink wrapped.
Dry Battery.



**TAHA WL 04 FLASH AMBER
WARNING LIGHT**
Traffic light LED: 1 battery.
2 ultra bright LED Amber.
Std flash rate: 65+/-5 FPM
Base: Yellow PP



**TAHA WL 07 SOLAR DB
RED WARNING LIGHT**
Solar traffic warning light
PS lens. 2pcs USMD LEDs.
Std flash rate: 65+/-5 FPM
Base: Yellow PP



**TAHA WL 24 GREEN
TRAFFIC BATON LIGHT**

6 LED traffic baton.
Colour: Green
Top: LED
Size: 54 x 4cm



**TAHA WL 25 YELLOW
TRAFFIC BATON LIGHT**

6 LED traffic baton.
Colour: Green
Top: LED
Size: 54 x 4cm



**TAHA WL WL 26
WARNING CHAIN**

Plastic. PE material.
Diameter: 6mm
In-length: 27mm
Out-width 20mm
50g, 25m/roll,
Colour: Red White



**TAHA WL WL 27
WARNING CHAIN**

Plastic. PE material.
Diameter: 8mm
In-length: 38mm
Out-width 26mm
85g, 25m/roll,
Colour: Red White



**WORKMAN WT AT 3"
BARRICADE TAPE**

35 microns.
Length: 300m.
Roll Weight: 750gms.
Double sided printing.



**WORKMAN WT CH 3"
BARRICADE TAPE**

3" x 200m warning tape.
Material: LDPE



**WORKMAN WT AT 3" X 250M
CAUTION BARRICADE TAPE**

One side printing.
Caution tape.
Material: LDPE



**WORKMAN 6" ELECTRICAL
BARRICADE TAPE**

35 microns.
Length: 250m.
Double sided printing.
Printing available in Arabic & English.



**WORKMAN WT AT 3" X 200M
DANGER BARRICADE TAPE**

One side printing.
Caution Tape.
Material: LDPE



+971 557983435

+971 557983433



+971 4 2243320



alanwarj@eim.ae



smbtrd2@gmail.com



<https://www.smbtrd.com/>

